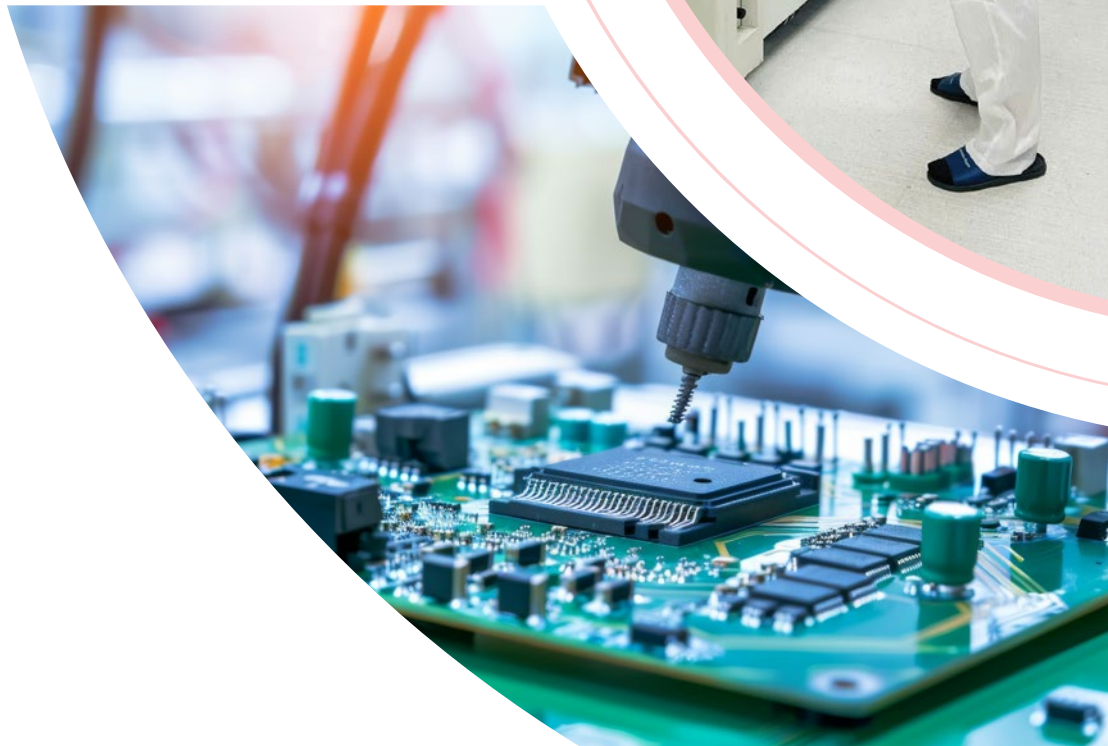




# SHDC COMPANY PROFILE



# SHDC



## INTRODUCTION

Dear Valued Partners and Customers,

SHDC Electronics Co., Ltd would like to extend our warmest greetings and sincere appreciation for your trust and continued cooperation.

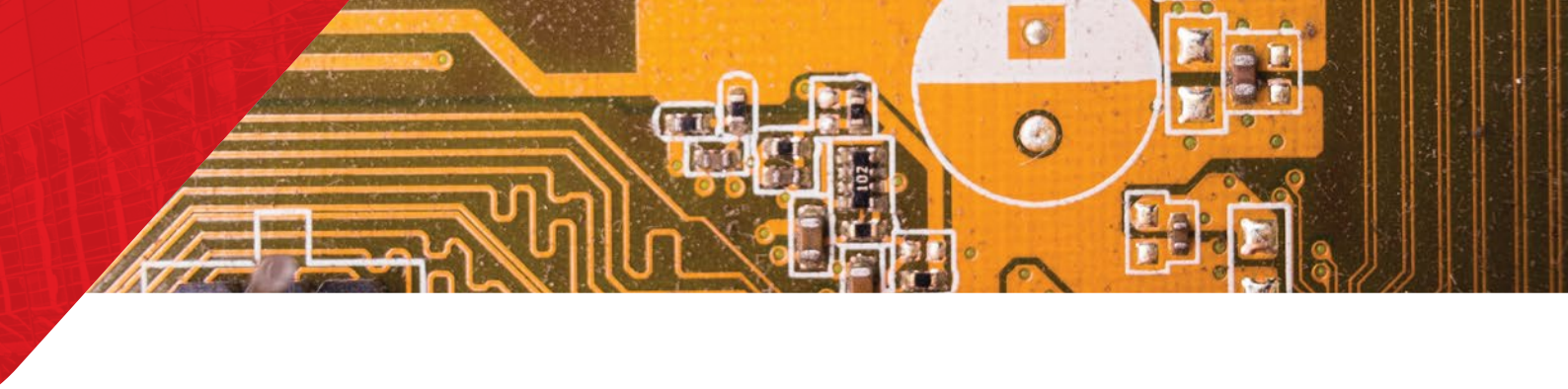
With a skilled technical team and modern production systems, SHDC provides comprehensive Electronics Manufacturing Services (EMS), from component soldering, assembly, and testing to final packaging. We are also committed to continuous research and development in automation and process improvement to deliver optimal performance and reliability.

At SHDC, quality, efficiency, and collaboration are our guiding principles. Every product reflects our dedication, precision, and responsibility at each stage of production.

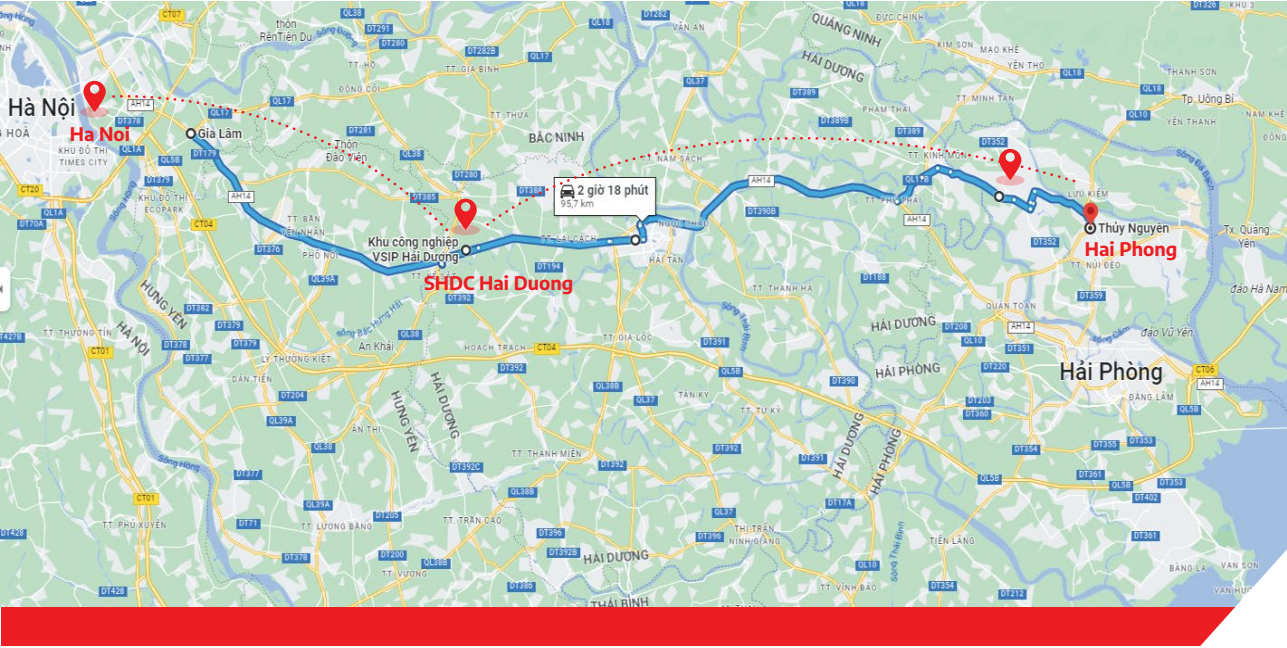
With a solid foundation and a vision for sustainable growth, SHDC Electronics Co., Ltd is proud to be your trusted partner, accompanying you toward innovation and success.

Sincerely,

SHDC ELECTRONICS CO., LTD



# FACTORY LOCATION



**LOCATION:**

VIETNAM SINGAPORE INDUSTRIAL PARK - HAI DUONG

**40km**

SHDC to Hanoi

**55km**

SHDC to Haiphong

# FACTORY SERVICE SCOPE – EMS



<b>Area</b>	The total area is about 2600 square meters
<b>Human resources</b>	Number of employees: 150
<b>SMT lines</b>	4 high speed
<b>DIP Lines</b>	3 DIP Lines
<b>Other Lines</b>	1 Assembly Line, 1 Test Line, 2 Packaging Line

## STANDARD CERTIFICATION



## MANUFACTURING CAPABILITIES

- High efficiency, high quality, high coordination
- Professional SMT, DIP, AI (AV, RG)
- Backend welding/testing/assembly/packaging
- Automation equipment R&D and process improvement team
- Professional OEM factory provides full process services
- Electronic Materials Buy and Sell



## PRODUCTION MACHINE

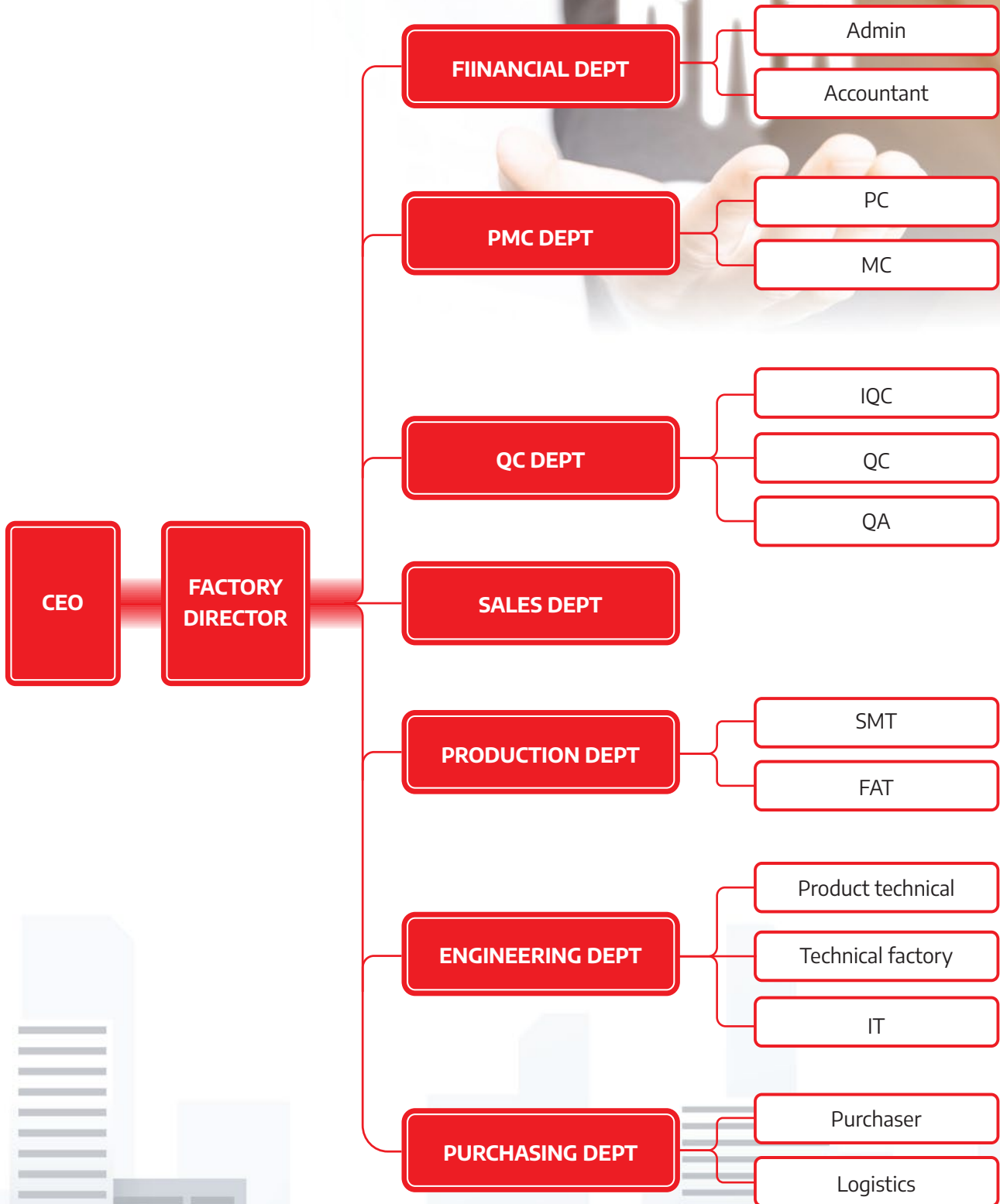
Machine	AV	RG	Mounter	DIP
Quantity	1	0	5	3

Process	Maker	RG	Item	Point/Month
AV	ZHX MA30	1	CAPA	4,500,000
SMT(Double Machine)	Yamaha	7	CAPA	98,000,000
DIP	JT	3	CAPA	1,700,000 (PCS)

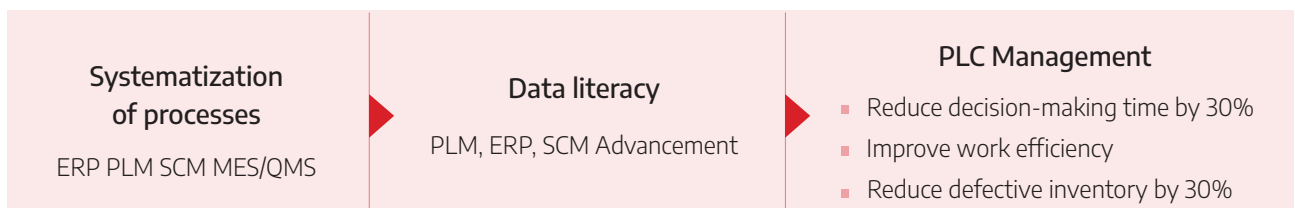
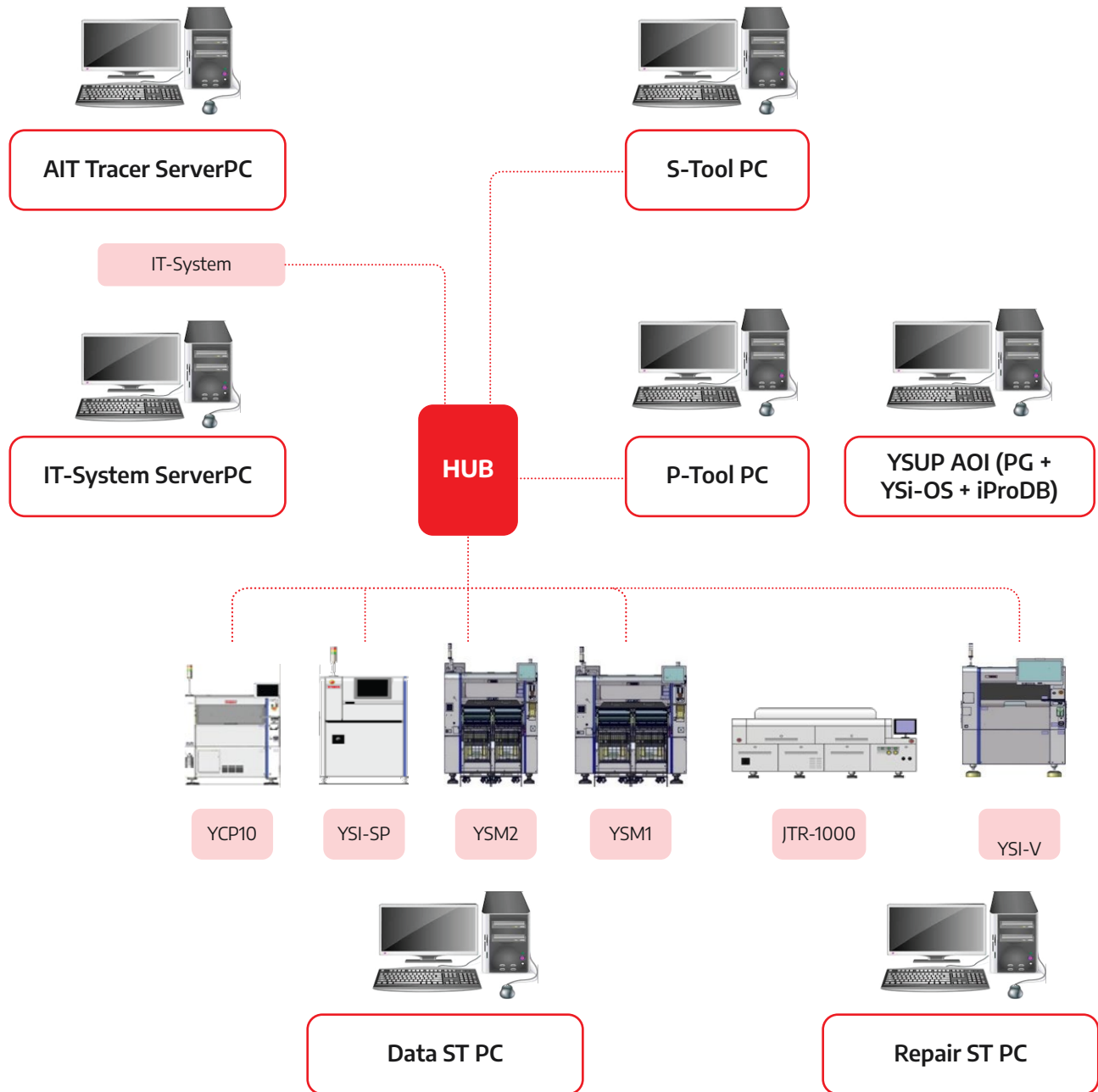
# CERTIFICATION



# ORGANIZATIONAL CHART



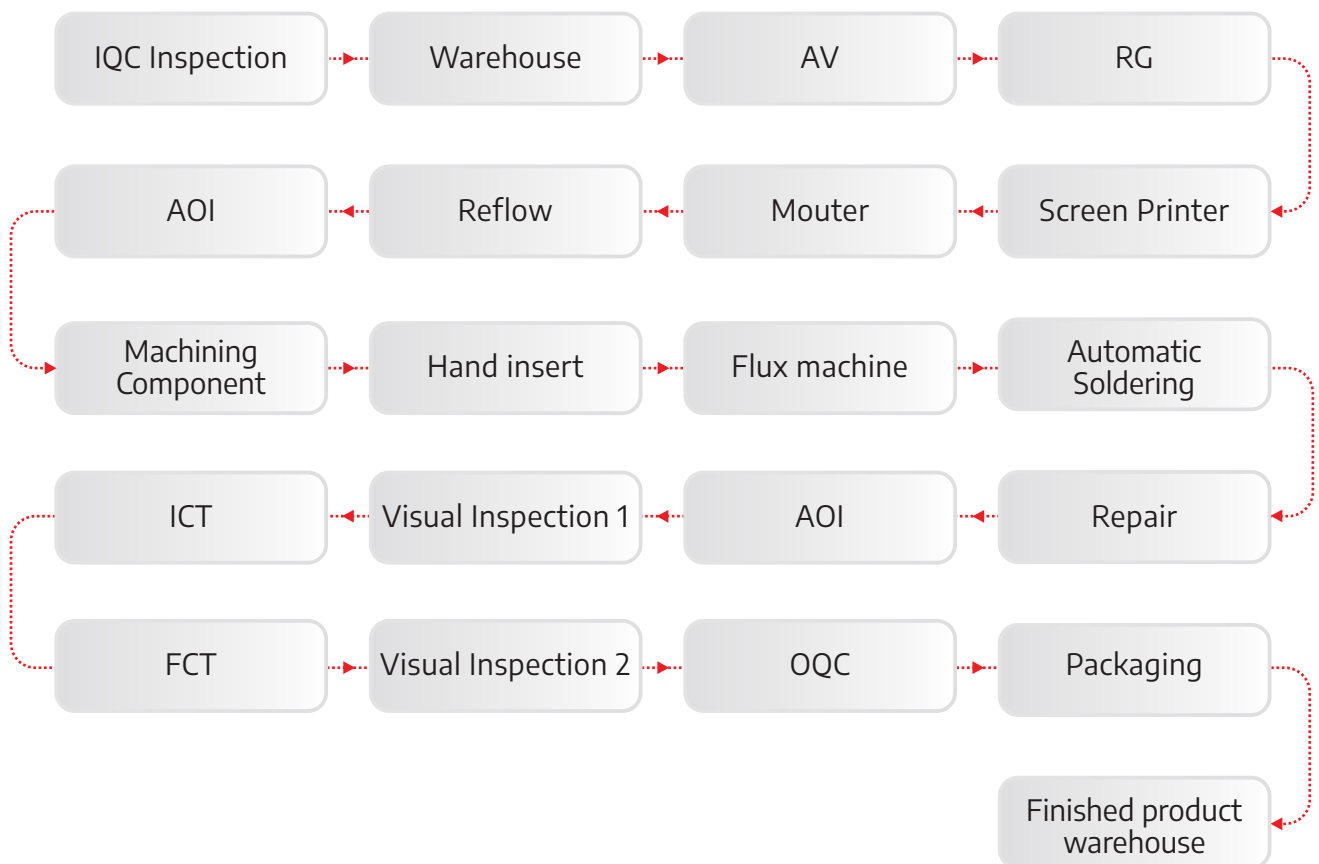
# PRODUCTION MANAGEMENT SYSTEM



# PRODUCT PROCESS



SHDC



# PRODUCTION FACILITIES



## ■ YAMAHA YSM20R MACHINE



- Part size 0402 (01005") to 32 x 32 mm
- Max. part height Max 6,5mm
- Placing accuracy  $\pm 0.03$  mm Cpk  $\geq 1.00$
- Chip & Leaded parts
- Head HM20 95,000CPH
- Option Autotray sATS30
- PCB size 50mmx50mm - 810mmx490mm
- Power requirements 200 ~ 230V AC ( $\pm 10\%$ ), three-phase (50/60Hz)

## ■ YAMAHA YCP10 MACHINE



- Panel size L x W 50 x 50 to 460 x 510 mm
- Panel thickness 0.4 to 3.0 mm
- Panel Warp Within 2.0 mm
- Panel conveyance load x
- Panel conveyance loading time 8 sec
- Smallest parts 0603 (0201")
- Squeegee Speed 1 to 200 mm/sec
- Power requirements Single phase 220 V  $\pm 10\%$  (50/60Hz) / 3.0 kVA

# PRODUCTION FACILITIES

## ■ YAMAHA YSM10 MACHINE



- Part size 03015 to 55 x 100 mm
- Max. part height Max 15mm
- Placing accuracy  $\pm 0.035$  mm Cpk  $\geq 1.00$
- Chip & Leaded parts
- Head HM10 46,000CPH
- Option Autotray sATS15
- PCB size 50mmx50mm - 510mmx460mm
- Power requirements 200 ~ 416V AC ( $\pm 10\%$ ), three-phase (50/60Hz)

## ■ Yamaha YSI-SP 3D SPI



## ■ Yamaha AOI 3D YSI-V



## ■ Kyoritsu ICT F-2000 Plus



## ■ Plug-in machine AV



## ■ JT wave soldering



## ■ Reflow Oven JT N2



# PRODUCTION FACILITIES

■ Component insert machine



■ LED forming machine



■ Ultrasound equipment



■ High voltage test



■ A,V test



■ Functional testing



■ Aging test



■ Laser marking equipment



# PCBA PORTFOLIO & APPLICATIONS

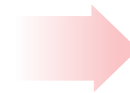
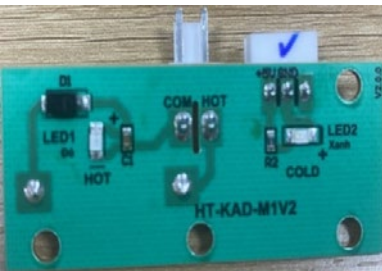
## ■ PCBA -PECO



## ■ Petrol



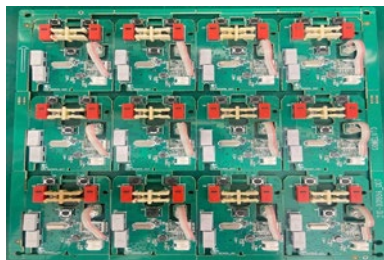
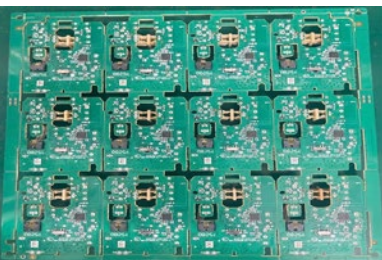
## ■ M1V2/M2V2 -Karofi/Tecomen



## ■ Water purifier



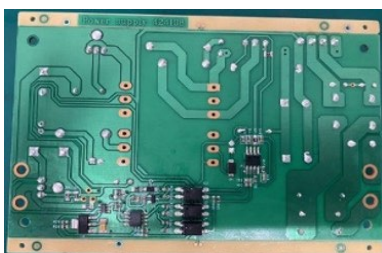
## ■ Computer Mouse



## ■ Computer Mouse



## ■ PCBA



## ■ Thaco



# PRODUCT INTRODUCTION

■ GaN  
67W 2C



■ GaN  
150W 3C1A



■ PD GaN  
Fast Charger



■ GaN  
100W 2C2A



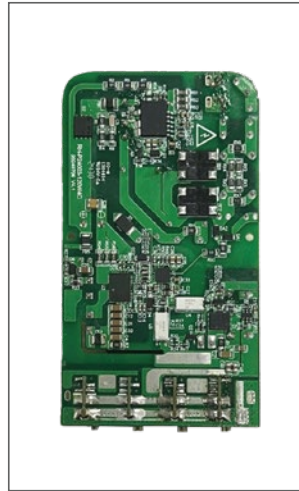
■ GaN  
70W Slim BOT



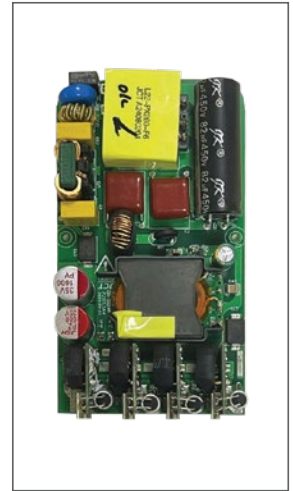
■ GaN  
70W Slim TOP



■ PD 120W BOT  
(Bluetooth)



■ PD 120W TOP  
(Bluetooth)



■ GaN 65W BOT



■ GaN 65W TOP



■ GaN 102W BOT



■ GaN 120W TOP




# CUSTOMERS





---

## SHDC ELECTRONICS CO., LTD

 **Factory:** A1-2, Lot 5, Cam Dien-Luong Dien IP, Cam Giang  
Commune, Hai Phong City, Vietnam

 090 344 3300

 hao @shdc.com.vn

 shdc.com.vn