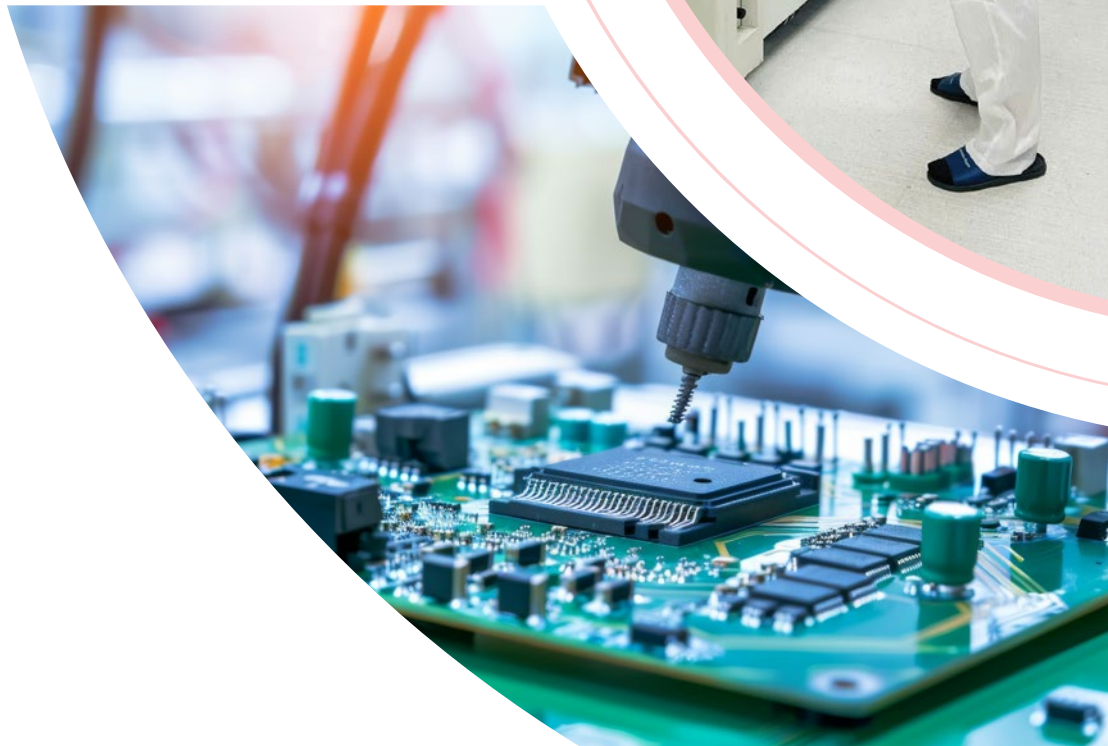




SHDC COMPANY PROFILE



SHDC



INTRODUCTION

Dear Valued Partners and Customers,

SHDC Electronics Co., Ltd would like to extend our warmest greetings and sincere appreciation for your trust and continued cooperation.

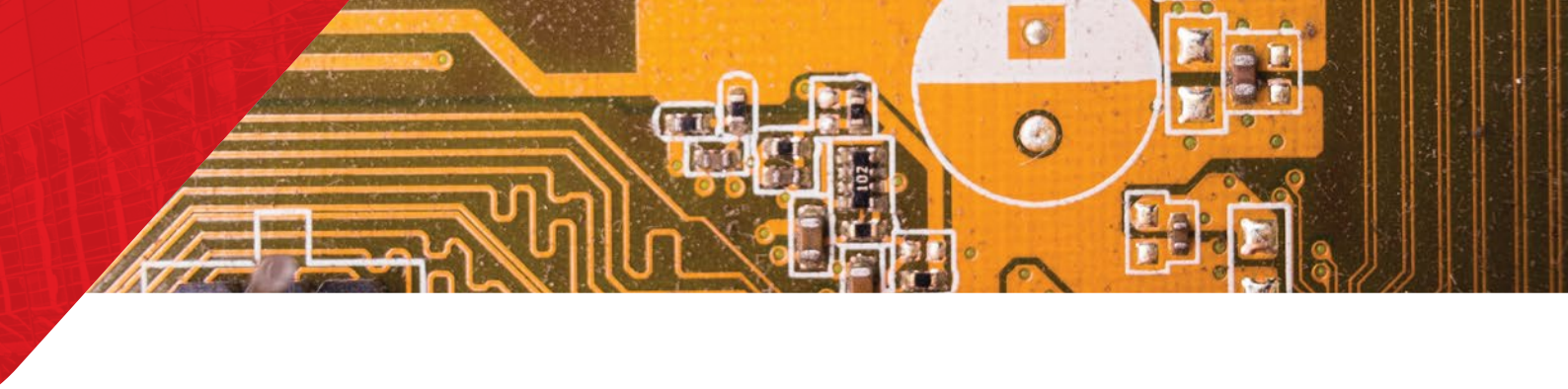
With a skilled technical team and modern production systems, SHDC provides comprehensive Electronics Manufacturing Services (EMS), from component soldering, assembly, and testing to final packaging. We are also committed to continuous research and development in automation and process improvement to deliver optimal performance and reliability.

At SHDC, quality, efficiency, and collaboration are our guiding principles. Every product reflects our dedication, precision, and responsibility at each stage of production.

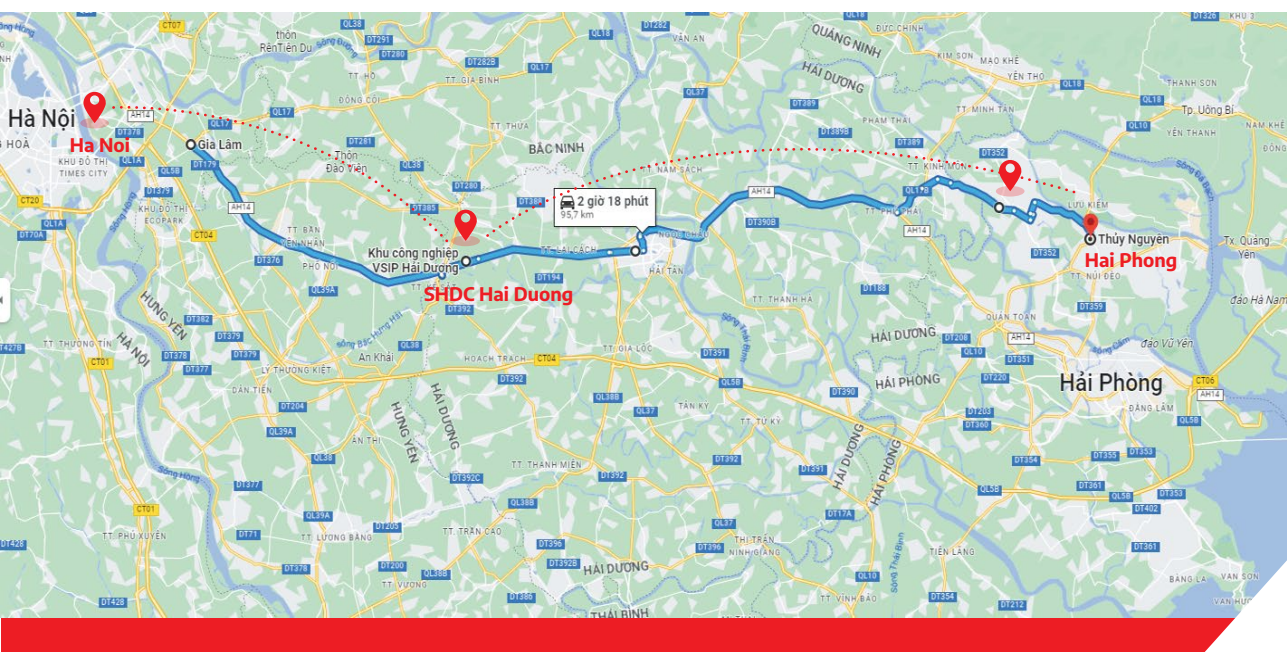
With a solid foundation and a vision for sustainable growth, SHDC Electronics Co., Ltd is proud to be your trusted partner, accompanying you toward innovation and success.

Sincerely,

SHDC ELECTRONICS CO., LTD



FACTORY LOCATION



LOCATION:

VIETNAM SINGAPORE INDUSTRIAL PARK - HAI DUONG

40km

SHDC to Hanoi

55km

SHDC to Haiphong

FACTORY SERVICE SCOPE – EMS



Area	The total area is about 2600 square meters
Human resources	Number of employees: 150
SMT line	4 SMT high speed lines
DIP Line	3 DIP lines
Other Line	1 Assembly Line, 1 Test Line, 2 Packaging Line

STANDARD CERTIFICATION



MANUFACTURING CAPABILITIES

- High efficiency, high quality, high coordination
- Professional SMT, DIP, AI (AV, RG)
- Backend welding/testing/assembly/packaging
- Automation equipment R&D and process improvement team
- Professional OEM factory provides full process services
- Electronic Materials Buy and Sell



PRODUCTION MACHINE

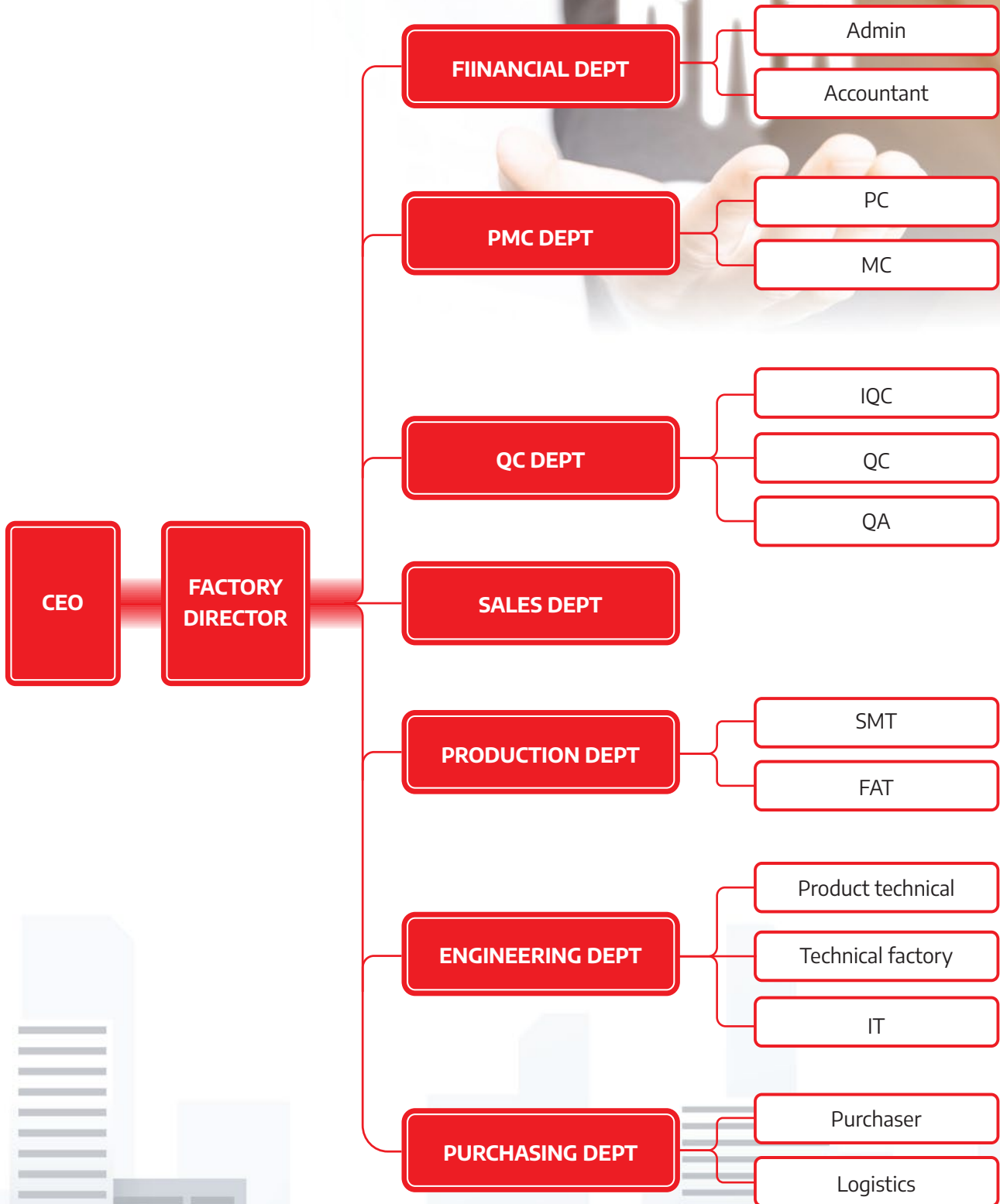
Machine	AV	RG	Mounter	DIP
Quantity	1	1	7	3

Process	Maker	Quantity	Item	Point/Month
AV	ZHX MA30	1	CAPA	4,500,000
SMT(Double Machine)	Yamaha	4	CAPA	98,000,000
DIP	JT	3	CAPA	1,700,000 (PCS)

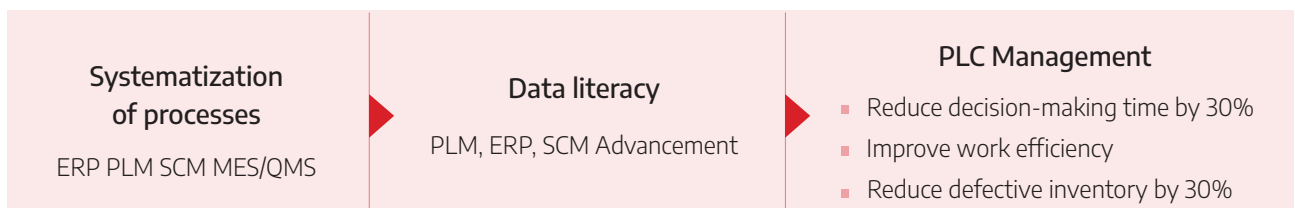
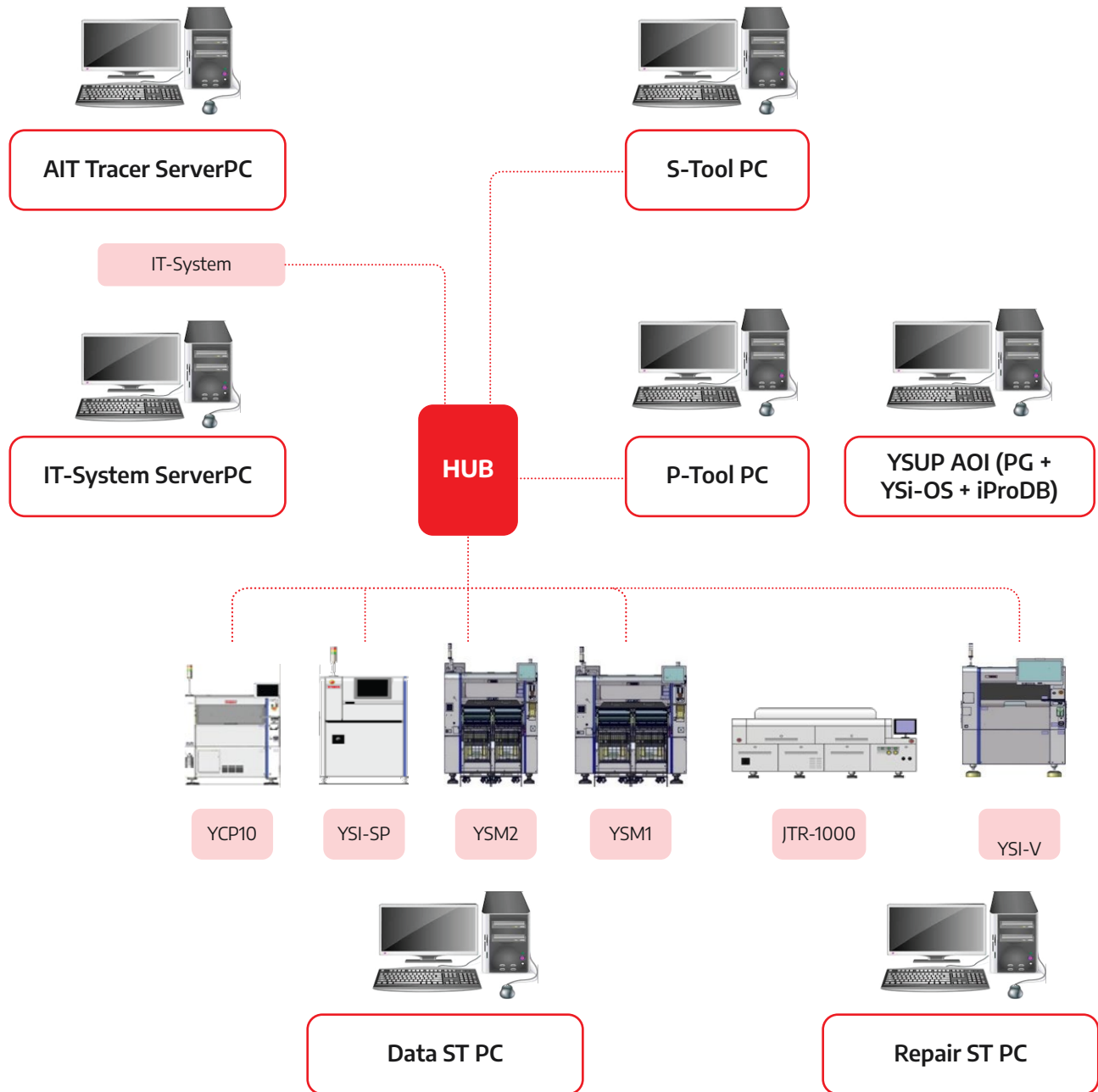
CERTIFICATION



ORGANIZATIONAL CHART



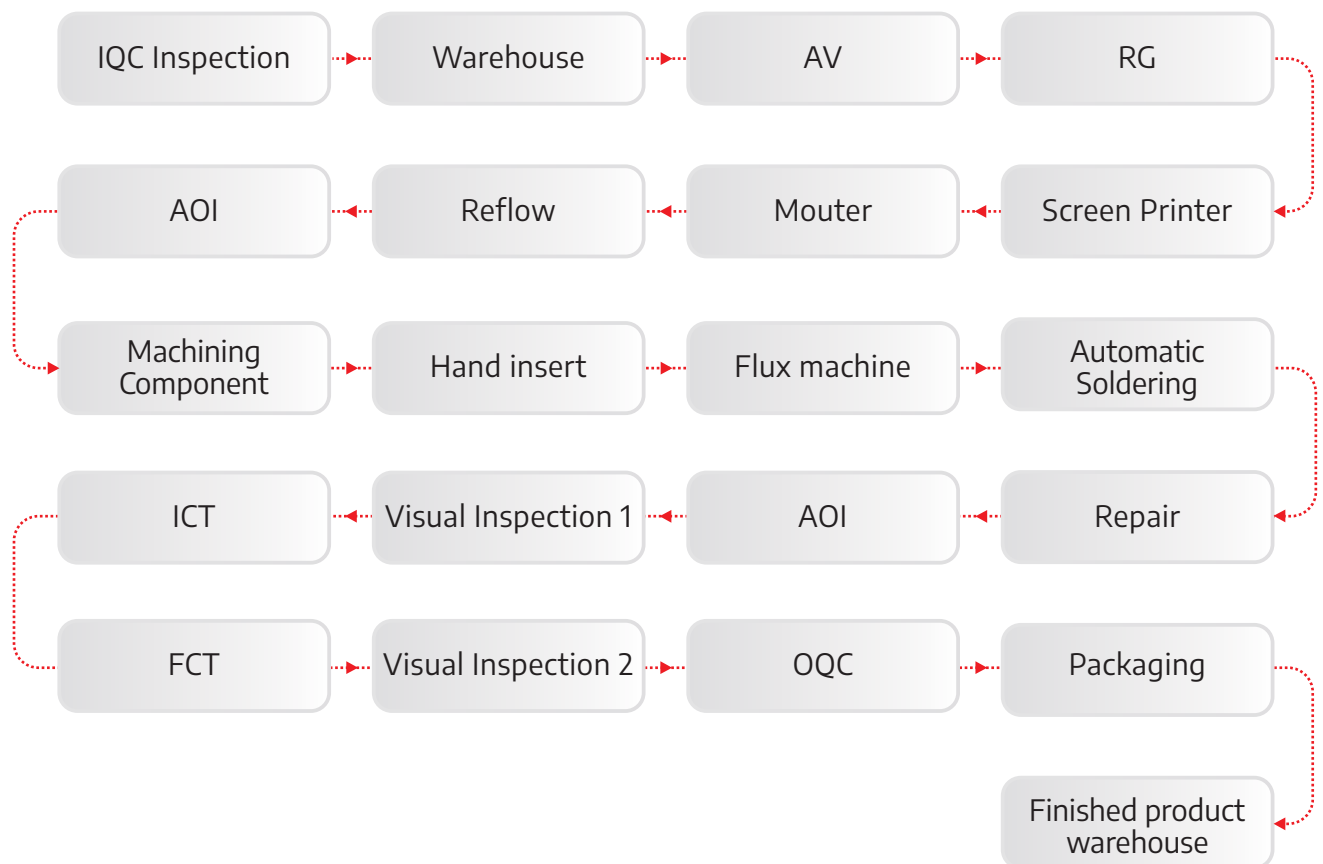
PRODUCTION MANAGEMENT SYSTEM



PRODUCT PROCESS



SHDC



PRODUCTION FACILITIES



■ YAMAHA YSM20R MACHINE



- Part size 0402 (01005") to 32 x 32 mm
- Max. part height Max 6,5mm
- Placing accuracy ± 0.03 mm Cpk ≥ 1.00
- Chip & Leaded parts
- Head HM20 95,000CPH
- Option Autotray sATS30
- PCB size 50mmx50mm - 810mmx490mm
- Power requirements 200 ~ 230V AC ($\pm 10\%$), three-phase (50/60Hz)

■ YAMAHA YCP10 MACHINE



- Panel size L x W 50 x 50 to 460 x 510 mm
- Panel thickness 0.4 to 3.0 mm
- Panel Warp Within 2.0 mm
- Panel conveyance load x
- Panel conveyance loading time 8 sec
- Smallest parts 0603 (0201")
- Squeegee Speed 1 to 200 mm/sec
- Power requirements Single phase 220 V $\pm 10\%$ (50/60Hz) / 3.0 kVA

PRODUCTION FACILITIES

■ YAMAHA YSM10 MACHINE



- Part size 03015 to 55 x 100 mm
- Max. part height Max 15mm
- Placing accuracy ± 0.035 mm Cpk ≥ 1.00
- Chip & Leaded parts
- Head HM10 46,000CPH
- Option Autotray sATS15
- PCB size 50mmx50mm - 510mmx460mm
- Power requirements 200 ~ 416V AC ($\pm 10\%$), three-phase (50/60Hz)

■ Yamaha YSI-SP 3D SPI



■ Yamaha AOI 3D YSI-V



■ Kyoritsu ICT F-2000 Plus



■ Plug-in machine AV



■ JT wave soldering



■ Reflow Oven JT N2



PRODUCTION FACILITIES

■ Component insert machine



■ LED forming machine



■ Ultrasound equipment



■ High voltage test



■ A,V test



■ Functional testing



■ Aging test



■ Laser marking equipment



PCBA PORTFOLIO & APPLICATIONS

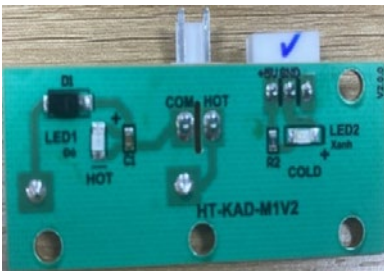
■ PCBA -PECO



■ Petrol



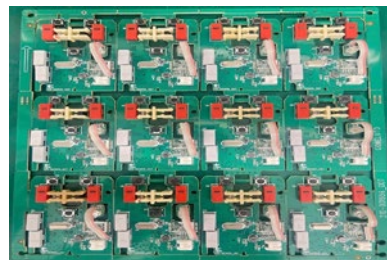
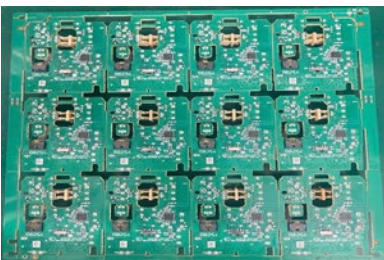
■ M1V2/M2V2 -Karofi/Tecomen



■ Water purifier



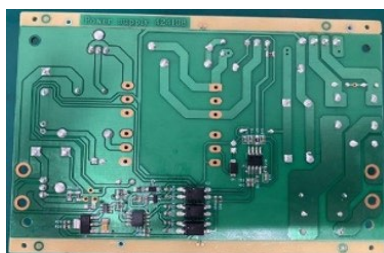
■ Computer Mouse



■ Computer Mouse



■ PCBA



■ Thaco



PRODUCT INTRODUCTION

■ GaN
67W 2C



■ GaN
150W 3C1A



■ PD GaN
Fast Charger



■ GaN
100W 2C2A



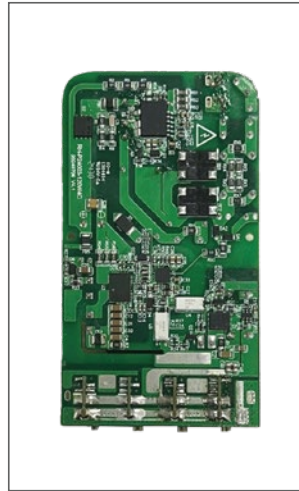
■ GaN
70W Slim BOT



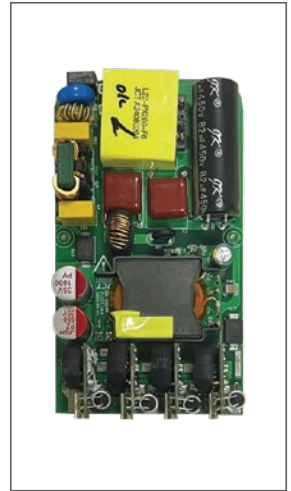
■ GaN
70W Slim TOP



■ PD 120W BOT
(Bluetooth)



■ PD 120W TOP
(Bluetooth)



■ GaN 65W BOT



■ GaN 65W TOP



■ GaN 102W BOT



■ GaN 120W TOP




CUSTOMERS





SHDC ELECTRONICS CO., LTD

 **Factory:** A1-2, Lot 5, Cam Dien-Luong Dien IP, Cam Giang
Commune, Hai Phong City, Vietnam

 090 344 3300

 hao @shdc.com.vn

 shdc.com.vn